



AL AMAR ENGINEERING CONSULTANCY



Passion for Design & Excellence

Elsefarat District , Nasr City,
Cairo, Egypt

+20 2 22876757
+20 122 7420341

info@alamarconsult.com

www.alamarconsult.com





CONTENTS

- Introduction
- Our Philosophy
- Full Consultancy Service Projects
- Building Renovation Projects
- Interior Design Projects
- Urban Studies & Design, Master Planning and Landscape Projects



WHO WE ARE

Al Amar Engineering Consultancies (AEC) is a multidisciplinary engineering consulting firm founded in Cairo, Egypt, in 1995 with an extensive collective professional experience within architectural and engineering consultancy services.

AEC prides itself with its tremendous growth over the years with a highly experienced team that is capable to provide sustainable solutions for multidisciplinary Engineering projects.

AEC has successfully completed a variety of projects of different types, sizes & nature providing full range of architectural and engineering services under one roof which facilitates the projects' management, coordination and quality control processes.



WHAT WE DO

- Project Management
 - Program Management
 - Project Management
 - Cost/Budget Management
 - Project Schedule Management
 - Procurement Strategies
 - Tender Management
- Architecture & Engineering
 - Project Conceptualization
 - Architectural Design & Detailing
 - Interior Design
 - Landscape Design
 - Structural Design
 - MEP Design
 - Infrastructure Design
 - Roads Design
 - Technical Specifications
 - Quantity Surveying
 - Signage & Graphic Design
- Studies & Planning
 - Feasibility Study
 - Site Appraisal & Selection
 - Master Planning
 - Urban Design
 - Environmental Interior Design
 - Fire & Life Safety
- Construction Services
 - Construction Management
 - Construction Supervision
 - Contract Administration
 - Cost Management
 - Quality Management
 - Procurement Services
 - Building Commissioning Services
 - Technical Support
- Other Services
 - Value Engineering
 - Architect of Record Services
 - Workshop Drawings
 - International Consultants Representation

OUR DESIGN PHILOSOPHY

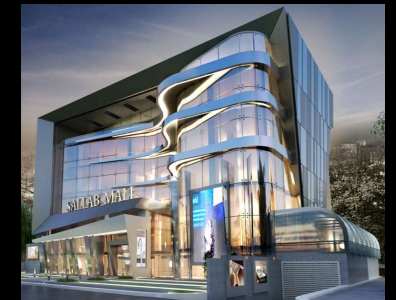
- You can't build anything meaningful if you don't understand the context in depth.
- Architecture relies on metaphor to convey an expression that is lasting and timeless.
- Our architectural solutions reflect the regional traditions of the areas in which we build and seek a timeless expression.
- We believe in simplicity & that form & function should complement each other, however, function prevails.
- We believe there is an opportunity for design excellence in all projects, irrespective of size & budget.
- Our strong pursuit for design excellence coupled with our belief in engaging the input of Client & other stakeholders will evolve a successful project.
- Our work is stylistic, and inspired by thoughtful, economic and efficient solutions that are meaningful to the public who inhabit and enjoy our buildings.
- Our design process integrates sustainable approaches & green design elements are integrated in the design to support the architectural experience and to create a healthy environment that is operationally sustainable.
- Landscape is the canvas or framework for all buildings. Thus landscape and built form are inseparably related and must be integrated into a cohesive architectural statement.
- Design integration takes a major emphasis & is supported by efficient teamwork.
- "The details are not the details. They make the design", Charles Eames, we pay great attention to details
- Cost effectiveness is an important factor for project success

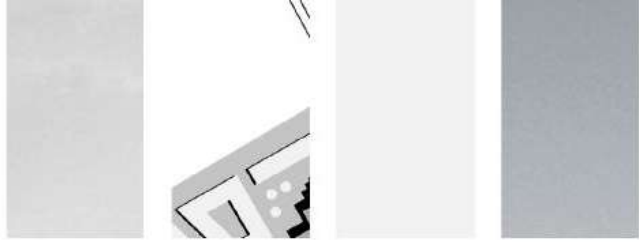
OUR BUSINESS PHILOSOPHY

- In addition to the projects we deliver, **AEC** is recognized for its **values** that have led to 60%+ repeat client rate.
- Our goal is to develop enduring business relationships that are built on trust, integrity, effective communications and delivering quality services on time and within budget.
- Maintaining our Client's interest is a top priority.
- Our employees are the fabric of our Company. They determine our reputation, capability and ultimately our success. We provide work environment that promotes self-improvement, teamwork and innovation.
- We pay special attention to our business ethics

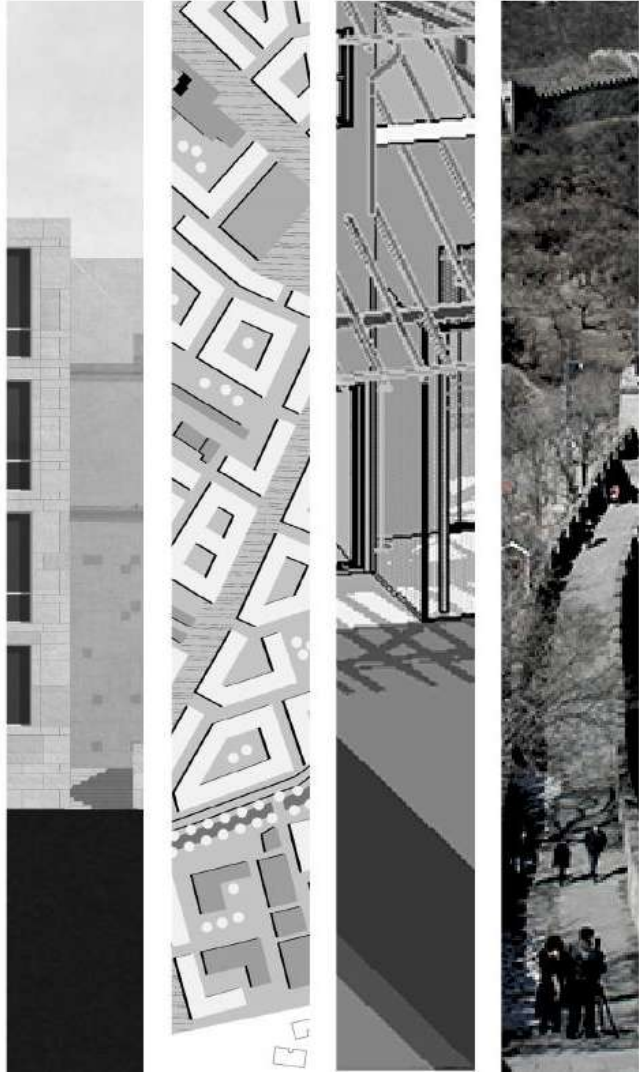
"Form Follows Function"

Louis H. Sullivan





FULL CONSULTANCY SERVICE PROJECTS





SALLAB MALL NEW CAIRO, EGYPT TAREK EL SALLAB

As a showroom for modern Architectural products, a contemporary design is adopted utilizing curved and clean lines in building mass & introducing modern façade & finishing materials

The building interior is designed as a universal space offering spacious & flexible areas

Scoop of Services

Concept Design
Project Visualization
Detailed Design
Tender Package
Tender Mgmt.
Contract Docs
Constr. Mgmt.
Constr. Supv.

Involved Trades

Architectural
Interior Design
Structural
Mechanical
HVAC
Electrical
Light Current
Façade Lighting
Infrastructure
Landscape



MAZLOUM MALL

SMOUHA – ALEXANDRIA, EGYPT

A three storey shopping mall for home furniture, accessories, tiles & lighting fixtures.

The building style is modernized classical, featuring classical architectural elements such as arches, huge pillars, corbels, cornices, friezes & other façade decorative features, all are merged with contemporary elements such as large glass panels, façade finishes & façade lighting.

The internal open space is designed to offer spacious & flexible areas; the interior is finished in neutral colors to suit different types & styles of exhibits.

Scoop of Services

Concept Design
Project Visualization
Detailed Design
Tender Package
Tender Mgmt.
Contract Docs
Proj. Permitting
Constr. Mgmt.
Constr. Supv.

Involved Trades

Architectural
Interior Design
Structural
Mechanical
HVAC
Electrical
Light Current
Façade Lighting
Infrastructure
Landscape



MAZLOUM MALL
DOKKI – CAIRO, EGYPT



Mazloum mixed-use main tower accommodates home furniture and accessories showrooms as well as the company's corporate offices, all are distributed over twelve floors plus basement for parking and building services.

The building style is modernized classical, merging classical features with contemporary look of large glass surfaces.

The showroom floors are designed as universal spaces offering spacious and flexible areas and the open office spaces are provided, to the extent possible, at office floors for maximum area utilization.



Scoop of Services

- Concept Design
- Project Visualization
- Detailed Design
- Tender Package
- Tender Mgmt.
- Contract Docs
- Proj. Permitting
- Constr. Mgmt.
- Constr. Supv.

Involved Trades

- Architectural
- Interior Design
- Structural
- Mechanical
- HVAC
- Electrical
- Light Current
- Façade Lighting
- Infrastructure
- Landscape



AL SALLAB MALL

NASR CITY – CAIRO, EGYPT

Mixed-use building with 7,800 m² BUA comprising 5 retail floors, 2 corporate offices floors & 6 residential floors, plus parking & services' basement

The retail floors are designated for architectural products showrooms.

A modern design is adopted for the building interior & exterior that is reflected on modern look of building mass, details & sleek finishing materials

Scoop of Services

Design Review
Value Engineering
Concept Design
Project Visualization
Detailed Design
Tender Package
Tender Mgmt.
Contract Docs
Constr. Mgmt.
Constr. Supv.

Involved Trades

Interior Design
Façade
Lighting

RETAIL



MAZLOUM MALL
TANTA DOWNTOWN, EGYPT



Modern look of building mass along with sleek finishing materials reflect the nature of the building and its function in promoting modern architectural products

The internal spaces are designed to provide maximum flexibility and to cater for regularly changing display themes



Scoop of Services

- Concept Design
- Project Visualization
- Detailed Design
- Tender Package
- Tender Mgmt.
- Contract Docs
- Proj. Permitting
- Constr. Mgmt.
- Constr. Supv.

Involved Trades

- Architectural
- Interior Design
- Structural
- Mechanical
- HVAC
- Electrical
- Light Current
- Façade Lighting
- Infrastructure
- Landscape



MOLTAKA MAZLOOUM MALL
SHERATON DISTRICT- CAIRO, EGYPT



RETAIL



As a showroom for Architectural products, a post modern design is adopted utilizing modern look of building mass & sleek finishing materials

Main entrance mass was stretched out to provide a bold look and a welcoming approach

Scoop of Services	Involved Trades
Concept Design	Architectural
Project Visualization	Interior Design
Detailed Design	Structural
Tender Package	Mechanical
Tender Mgmt.	HVAC
Contract Docs	Electrical
Proj. Permitting	Light Current
	Façade Lighting
	Landscape

MAZLOUM MALL

NORTH COAST – ALEXANDRIA, EGYPT

A shopping Mall for furniture and home accessories, comprising one basement and six stories over a land area of 4,100 m², with a total built up area of 3,500 m².

Post modern architecture is represented by introducing classical elements with modern treatment and in association with modern materials such as large glass surfaces.

Scoop of Services	Involved Trades
Concept Design	Architectural
Project Visualization	Interior Design
Detailed Design	Structural
Tender Package	Mechanical
Tender Mgmt.	HVAC
Contract Docs	Electrical
Proj. Permitting	Light Current
Constr. Mgmt.	Façade Lighting
Constr. Supv.	Infrastructure
	Landscape



BAHRAIN STUDENTS CLUB
MOHANESEEN – CAIRO, EGYPT



Ministry of Works of Bahrain Kingdome intended to provide a recreational club premises for its students residing in Egypt, concepts are developed and inspired by the Bahraini native architecture.

Scoop of Services	Involved Trades
Design Review	Architectural
Detailed Design	Interior Design
Tender Package	Structural
Tender Mgmt.	Mechanical
Contract Docs.	HVAC
Project	Electrical
Permitting	Light Current
Constr. Mgmt	Façade Lighting
Constr. Supv.	Infrastructure
	Landscape



SNS ADMINISTRATION BUILDING

AL AKIK – RIYADH, KSA

Contemporary design is adopted to represent SNS as a leading company in the field of ACT and Oil & Gas services, the design utilizes futuristic curvy forms, glass and sleek finishes which affords a unique image within the surroundings.

The internal spaces were tailor designed to cater for organizational and operational requirements as well as anticipated future growth

Scoop of Services

Concept Design
Project Visualization
Detailed Design
Tender Package
Tender Mgmt.

Involved Trades

Architectural
Interior Design
Structural
Mechanical
HVAC
Electrical
Light Current
Façade Lighting
Infrastructure





GRAND GROUP HEADQUARTERS DAMIETTA, EGYPT

Grand Group Headquarters building is designed to represent a unique theme that balances between classical and modern architecture and differs from all buildings in the site context; meanwhile, reflects the organization strength in the market.

The building comprises five stories accommodating all production departments, laboratories, lecture rooms, and staff facilities. The top management occupies a separate floor with VIP lounges next to chairman's suite.



Scoop of Services

Concept Design
Project Visualization
Detailed Design
Tender Package
Tender Mgmt.
Constr. Mgmt.
Constr. Supv.

Involved Trades

Architectural
Interior Design
Structural
Mechanical
HVAC
Electrical
Light Current
Infrastructure



AVICENNIA HOTEL

TABA - SOUTH SINAI, EGYPT

As part of the Client plan to upgrade its Taba hotels development, Al Amar was requested to provide services related to:

- Redesign of the master plan, landscape & swimming pool
- Design development of:
 - Main building including reception lobby & front desk, back offices & administration, retail, food & beverage outlets including restaurants & cafes
 - Guest accommodation buildings including 100 suites & 160 guestrooms
 - Staff Accommodation building
 - Building façades
 - Kids club
- Furnishing a completely new design for back of the house



Scoop of Services

Master Planning
Design Review
Concept Design
Design
Development
Constr. Supv.

Involved Trades

Master Planning
Architectural
Interior Design
Landscape

In Association with **AMAR GROUP S.A.**

ALKAN FOOD PROCESSING PLANT

BORG EL ARAB INDUSTRIAL ZONE, EGYPT

Industrial plant on a 22,500 m² located next to fish farm on the Mediterranean Sea to produce tuna & meat processed food.

The plant comprises two main production platforms on 6,500 m², two storage buildings, staff accommodation, mosque and main administration building.



BIANCHI HOTEL

NORTH COAST – ALEXANDRIA, EGYPT



Scoop of Services

Master Planning
Concept Design
Project
Visualization
Detailed Design
Tender Package
Involved Trades

Master
Planning
Architectural
Interior Design
Landscape

Bianchi Resort at Sidi Abd El-Rahman is a four-star hotel with a capacity of 236 keys, all offer spectacular views, either in the foreground via nicely designed court with swimming pool, or the stunning sea view in the background.

The V-shaped hotel building confine an open type court, the beach constitutes a visual & functional extension for the court, where guests' activities would expand into the sea and the landscape design has taken this spatial progression into account.



PYRAMIDS CONFERENCE & EVENT CENTER

SUEZ CITY – EGYPT

The project's design concept is inspired by the Client's name; the designer was stimulated employ vocabulary of ancient Egypt architecture in a modernized treatment, which appears in architectural forms, quadrilateral base pyramid shaped entrance lobby, massive walls, slotted openings & pylon shaped façade elements.

The Project comprises main entrance lobby, two main event halls with pre-function area, restaurant & coffee shop, main kitchen, adminstartion offices & building services.



<u>Scoop of Services</u>	<u>Involved Trades</u>
Master Planning	Architectural
Concept Design	Interior Design
Project Visualization	Structural
Detailed Design	Mechanical
Project Permitting	HVAC
Tender Package	Electrical
Constr. supervision	Light Current
	Landscape
	Façade Lighting

PYRAMIDS CONFERENCE & EVENT CENTER
SUEZ CITY – EGYPT



INDOOR SPORTS CLUB
AL HARIQ – RIYADH, KSA

Indoor sports hall is multi-functional with a footprint of approx. 8000 m² to host basketball, handball, and volleyball and is attached with VIP building.

The Project is a sports complex composing of:

- Indoor Sports Hall
- Indoor Swimming Pool
- VIP Building
- Tennis Courts
- Football Field and Stadium
- Site Facilities

The indoor swimming pool is Olympic, designed to conform to the FINA standards with more than 250 spectator seats.

Each building is provided with facilities for Athletes, technical teams and administrators.

<u>Scoop of Services</u>	<u>Involved Trades</u>
Design Review	Architectural
Detailed Design	Landscape
Tender Package	



EL FATEH SCHOOL COMPLEX

NEW CAIRO, EGYPT

El Fateh Schools management invited Al Amar to provide consultancy services required for the development of its branch campus in New Cairo.

The campus comprises two main educational buildings to host elementary & secondary schools facilities, in addition to a separate building for theater, preschool classes & facilities.

Administration building is strategically located in the master plan to take on control of the entire campus activities. The campus also includes indoor sports facilities and assembly



Scoop of Services

Design Review
Master Planning
Concept Design
Project Visualization
Detailed Design
Constr. Supv.

Involved Trades

Master Planning
Architectural
Landscape



EL SALLAB MOSQUE
NEW CAIRO, EGYPT

In the axis of El Sheikh Zaid road, this Islamic center is located, the mosque with its dominant with its architectural mass forms an impressive vista between the New Administrative Capital and the New Cairo City.

The mosque is designed with a capacity exceeds 1,200 worshippers and is attached with multi-use halls serving the community.



Scoop of Services	Involved Trades
Master Planning	Master Planning
Concept Design	Architectural
Project Visualization	Interior Design
Detailed Design	Structural
Project Permitting	Mechanical
Tender Package	HVAC
Tender Mgmt.	Electrical
Contract Docs.	Light Current
Constr. Mgmt.	Façade Lighting
Constr. Supv.	Landscape

BARON COMPOUND

KATTAMEIYA – CAIRO, EGYPT



The renowned real estate developer OUD invited Al Amar to furnish design services for its new compound in Kattameiya, namely, The Baron Compound. It's a residential compound consisting of 60 apartment blocks exploiting 9 building prototypes.

The design considers common requirements of Egyptian families and maximum benefit from views and urban open spaces offered by the master plan.



Scoop of Services

Concept Design
Project
Visualization
Detailed Design
Project Permitting
Tender Package

Involved Trades

Architectural
Structural
Mechanical
HVAC
Electrical
Light Current



YASSER SHAKER COMPOUND

6TH OF OCTOBER CITY, EGYPT

The development consists of a number of 15 villas, on a plot of land of 8,000 m², each villa comprises basement, ground and first floors with a total BUA of 600 m².

The architectural theme is inspired by Mediterranean Architecture featuring pitched and tiled roofs and arched opening.

Scoop of Services

Master Planning
Concept Design
Project
Visualization
Detailed Design
Project Permitting

Involved Trades

Master
Planning
Architectural
Structural
MEP
Landscape



EL NAKHEEL COMPOUND

EL SHOROUK CITY – NEW CAIRO, EGYPT



A residential development comprising 24 apartment buildings following 4 building prototypes, and built within a master plan of open urban spaces, roads and attractive landscaped areas, all are developed on a land area of 220 acres as part of El Nakheel master development



Scoop of Services

Concept Design
Project
Visualization
Detailed Design
Project Permitting
Tender Package

Involved Trades

Architectural
Structural
Mechanical
HVAC
Electrical
Light Current



EL NAKHEEL COMPOUND
EL SHOROUK CITY – NEW CAIRO, EGYPT



PALACE AT 90TH STREET

NEW CAIRO, EGYPT

A family residence is designed in a classical roman order reviving palaces styles in medieval Europe.

The palace comprises four storeys with a total built up area of 3,800 m², swimming pool, spa and recreational facilities, as well as a basement accommodating parking and building services.

Scoop of Services

Master Plan
Concept Design
Project
Visualization
Detailed Design
Project Permitting
Tender Package
Constr. Supv.

Involved Trades

Architectural
Interior Design
Structural
MEP
Façade Lighting
Infrastructure
Landscape



DUNES PALACE

DUNES COMPOUND – NEW CAIRO, EGYPT

An extended family's residence complex, comprising of 5 duplex units integrated together to form a consolidated mass representing classical architectural style.

On 2,400 m² plot of land, the total BUA 5,000 m² and the site also includes swimming pool & recreational



Scoop of Services	Involved Trades
Concept Design	Architectural
Project Visualization	Interior Design
Design	Structural
Development	Mechanical
Detailed Design	HVAC
Project Permitting	Electrical
Tender Package	Light Current
	Façade Lighting

VILLA COMPLEX

DUNES COMPOUND - NEW CAIRO, EGYPT

A modern villa design that emphasizes simple clean lines and geometric shapes with no ornamental elements, rather the building aesthetics are provided by dynamic masses, shades & shadows and variety of harmonized finishes.

The complex comprises a number of four villas for one extended family with common swimming pool & shared amenities.

The internal spaces are designed to correspond to the family functional requirements & to provide pleasant & comfortable living environment through proper selection of finishing materials & color pallets.

Scoop of Services

Concept Design
Project Visualization
Design
Development
Detailed Design
Project Permitting
Tender Package
Involved Trades

Architectural
Interior Design
Structural
Mechanical
HVAC
Electrical
Light Current
Façade Lighting



SHOBRAMANT VILLA

GIZA, EGYPT

"As an Architect, you design for the present, with the awareness of the past, for a future that is essentially unknown"

Sir Norman Foster



Concept design of a villa complex that promotes building sustainability and green building principals, utilizing passive architecture to deal with environmental conditions & considering cultural backgrounds of the area.

The design exploits traditional architectural features such as domes, patios & vaults which achieved, in addition to the aforementioned criteria, a special aesthetical touches.



Scoop of Services

Master Planning
Concept Design
Project
Visualization
Design
Development
Involved Trades

Master Plan
Architectural
Landscape

LAKEVIEW VILLA 45/5
NEW CAIRO, EGYPT

Private villa comprises three stories with a total BUA of 2,100 m². It is a modern design emphasizing simple clean lines and geometric shapes with no ornamental elements, rather the building aesthetics are provided by dynamic masses, shades and shadows and variety of harmonized finishes.



Scoop of Services

Master Plan
Concept Design
Project
Visualization
Detailed Design
Project Permitting
Tender Package
Constr. Supv.

Involved Trades

Architectural
Interior Design
Structural
MEP
Façade Lighting
Infrastructure
Landscape



PRIVATE VILLA

WEST GOLF COMPOUND – NEW CAIRO, EGYPT



A single family residence comprises of one basement with an area of 1,200 m² accommodating health club, car parking spaces and building services, in addition to three upper floors with a total BUA of 1,650 m².

The health club facilities overlook an English court, integrated with the landscape and includes swimming pool, sauna and Jacuzzi.



Scoop of Services

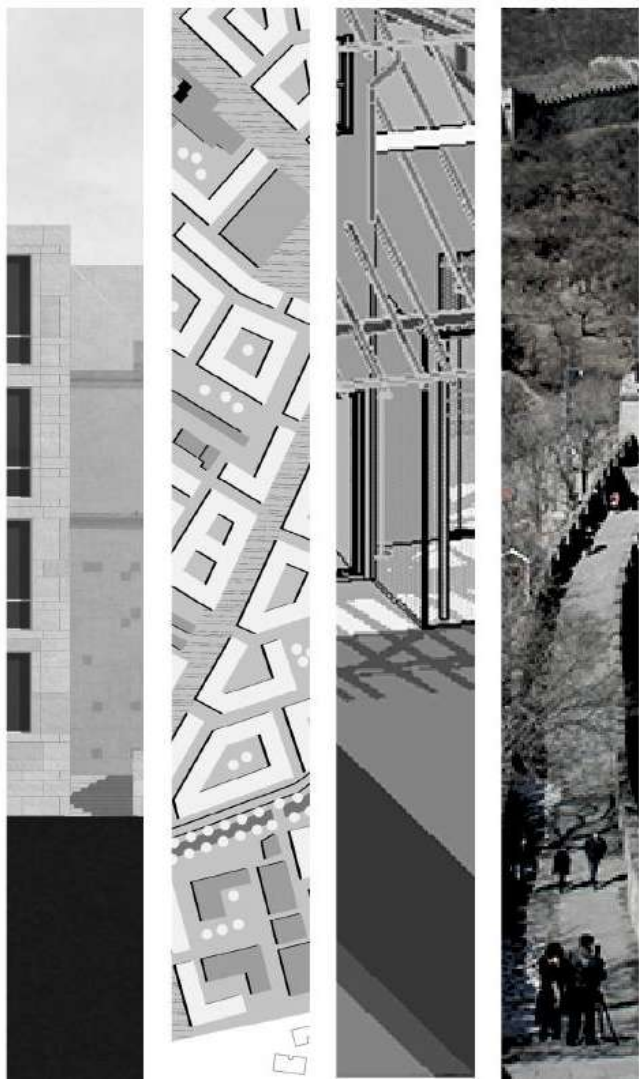
Master Plan
Concept Design
Project
Visualization
Detailed Design
Project Permitting
Tender Package
Constr. Supv.

Involved Trades

Architectural
Interior Design
Structural
MEP
Façade Lighting
Infrastructure
Landscape



BUILDING RENOVATION & UPGRADE PROJECTS



ASSESSMENT AND UPGRADE OF THE AUC CAMPUS IN NEW CAIRO

(EMERGENCY WEATHER OP. PLAN)

NEW CAIRO, EGYPT



Al Amar scope of work for this Project was as follows:

- Carryout a thorough survey of the campus site and buildings
- Asses the current quality of structures
- Highlight problematic areas, particularly with respect to water leakage
- Propose smart yet practical solutions for the upgrade
- Redevelop landscape based on stakeholders orientation

The scope of work limitations covered an approximate area of 253 acres of the campus site



Scoop of Services

Design Review
Bldg. Cond. Assess.
Concept Design
Detailed Design
Tender Package
Tender Mgmt.
Contract Docs.
Constr. Mgmt.

Involved Trades

Architectural
Structural
Landscape

ORIENTAL PETROCHEMICAL COMPANY SUEZ INDUSTRIAL ZONE – EGYPT

OPC main administration building is a four-storey building designed on 3,250 m² plot of land.

The building massing and façade details are inspired by traditional Islamic-Arab architecture, featuring complex mass components, variety of opening shapes and sizes and modernized Islamic architectural details.

Green building sustainability measures are considered in the design.



Scoop of Services

Concept Design
Project Visualization

Involved Trades

Architectural



COSMOPOLITAN HOTEL RENOVATION

DOWNTOWN CAIRO, EGYPT



Cosmopolitan Hotel is one of the oldest concrete structure hotels ever built in Cairo, as it goes back to the last century. It is considered an architectural masterpiece of an extraordinary European style.

The Egyptian General Company for Tourism and Hotels (EGOTH) has intended to fully renovate the hotel preserving its historical value.

Al Amar scope of services included:

- Assessment of Existing Condition
- Architectural Conceptual Design and BODR
- Detailed Architectural Design
- Preparation of Architectural Ten



In Association with
AMAR CONSULTING GROUP S.A

BAHRAIN AMBASSADOR'S RESIDENCE

ZAMALEK – CAIRO, EGYPT



Bahraini Ministry of Works desired to provide extensions to its Ambassador's Residence, upgrade the existing structures and enhance the residence interior and exterior.

Al Amar carried out necessary surveys and assessment of existing building and proposed form and size of extensions to fulfil the Client requirements, prepared a concept for the interior & exterior design and landscape.



After

Before

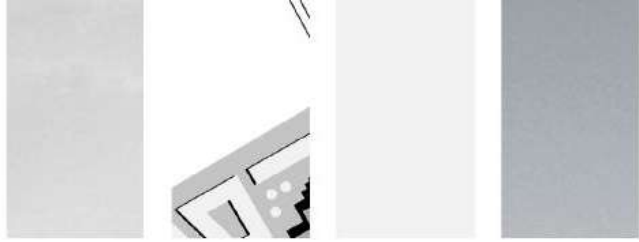


Scoop of Services

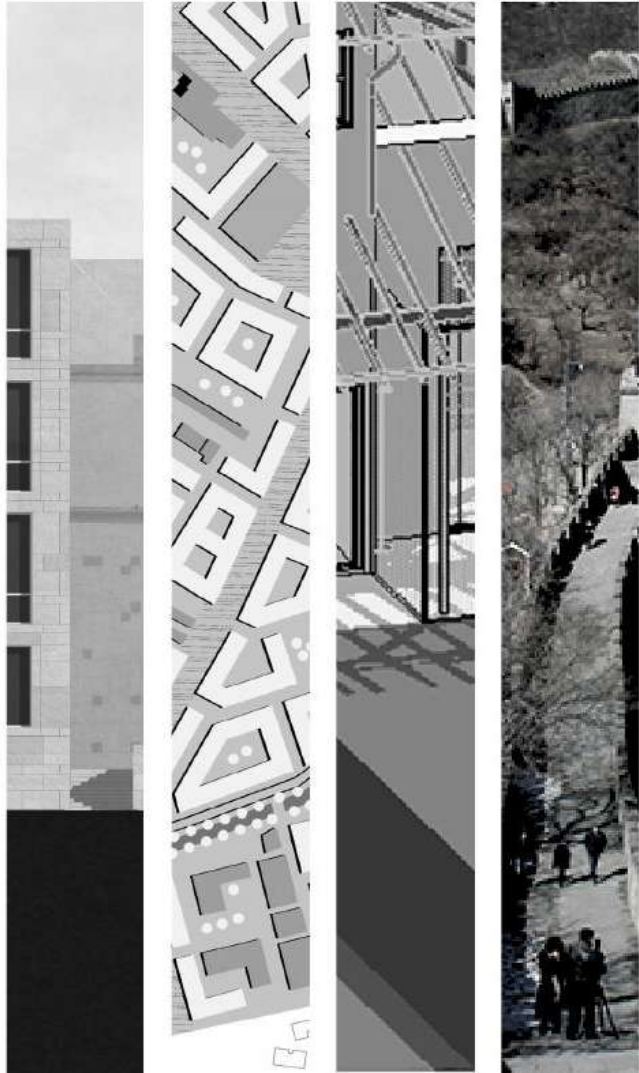
Design Review
Bldg. Cond. Assess.
Concept Design
Detailed Design
Project Permitting
Tender Package
Tender Mgmt.
Contract Docs.
Constr.
Management

Involved Trades

Architectural
Interior Design
Structural
MEP
Façade
Lighting
Infrastructure
Roads
Landscape



INTERIOR DESIGN PROJECTS



MAZLOUM MALL

CITY STARS – CAIRO, EGYPT

RETAIL



A contemporary interior design for architectural products showroom over seven floors with a total area of 7,000 m². As for commercial spaces, the design targeted to fulfill its business' purposes in a highly functional way, yet to ensure a polished, stylish, and welcoming ambiance.

Space planning has considered types of exhibits as advised by Client, comfortable & safe circulation and preferred mode & style of space.

Scoop of Services

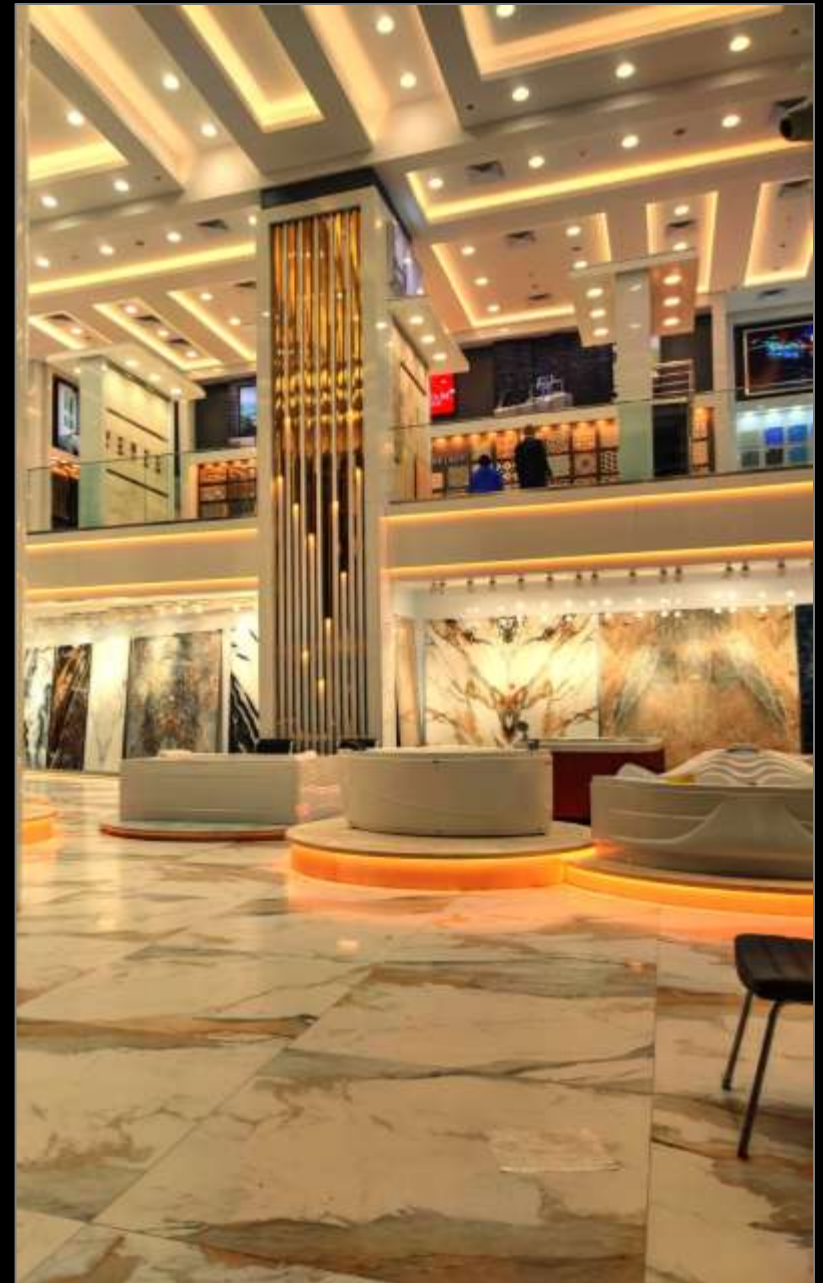
Concept
Design
Detailed Design
Tender
Package
Tender Mgmt.
Contract Docs.
Constr. Mgmt..
Constr. Superv.



MAZLOUM MALL

CITY STARS – CAIRO, EGYPT

The showroom double height is utilized to spatially connect the floor interiors forming consolidated dynamic spaces.



GRAND GROUP HEADQUARTERS
DAMIETTA, EGYPT



Scoop of Services

- Concept
- Design
- Detailed Design
- Constr. Mgmt..
- Constr. Superv.



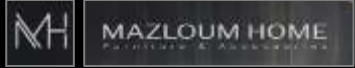
Classical design theme is adopted for all senior & top management that showcases the company's corporate image.

High-end finishing materials are used in modernized details, wood clad walls give a sense of warmth while sleek marble floors offers luxurious look & brightness to the spaces all are harmonized in colors & textures to introduce a charm look to the interior.



MAZLOUM MALL

NORTH COAST – ALEXANDRIA, EGYPT



A showroom for architectural finishes, sanitary fixtures & fittings and interior accessories for high-end kitchen and bathroom design brands with a total BUA of 7,000 m².

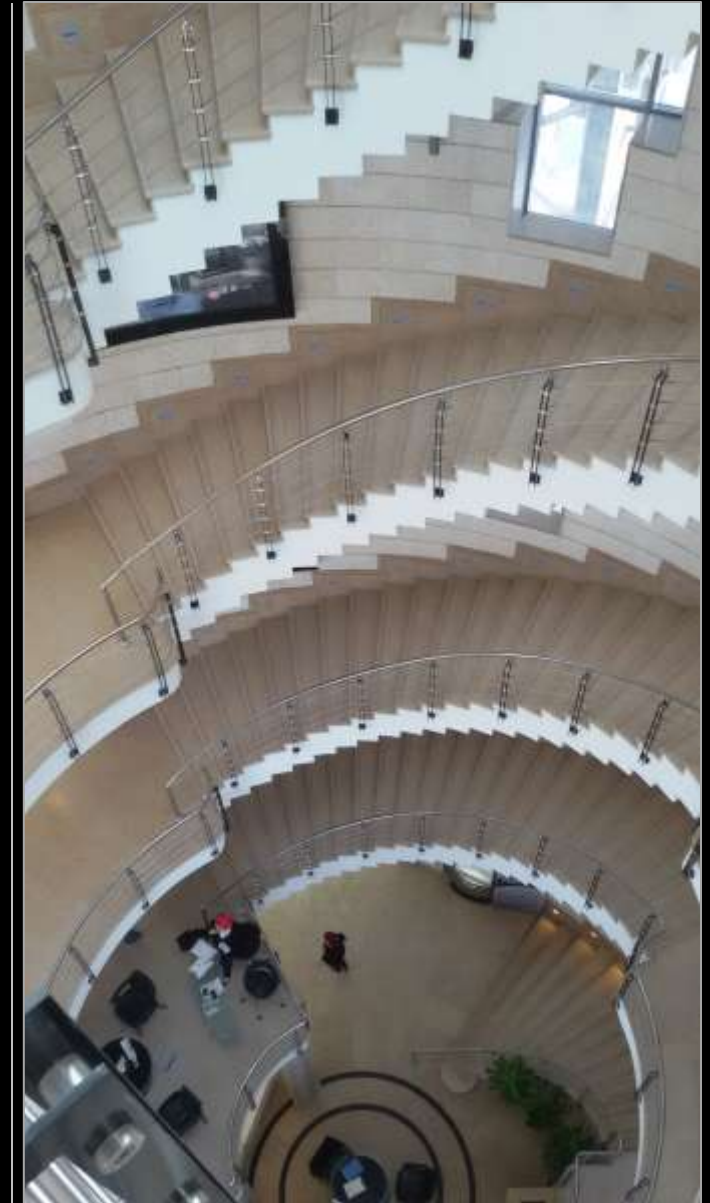
The interior design is modern in style and is dominated by a sculptural helical staircase that twists up through the showroom around an atrium.

The most up-to-date finishing materials are used throughout the showroom with incorporation of modern technology elements and light effects.



Scoop of Services

Concept
Design
Detailed Design
Tender
Package
Tender Mgmt.
Contract Docs.
Constr. Mgmt..
Constr. Superv.



MAZLOUM CITY LIGHT MALL

ALEXANDRIA, EGYPT



Modern style showroom, on 3,200 m² distributed over 3 floors, for architectural finishing materials and kitchen & bathroom fitting & accessories.

The design aimed at ensuring every material is well displayed with adequate lighting, proper space to walk around the displayed materials, proper air cooling all over the showroom and potential for flexible area utilization.



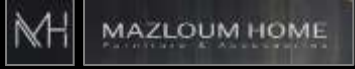
Scoop of Services

Concept
Design
Detailed Design
Tender
Package
Tender Mgmt.
Contract Docs.
Constr. Mgmt..
Constr. Superv.



MAZLOUM MALL

SMOUHA – ALEXANDRIA, EGYPT



A showroom for Mazloum Home brand that includes stylish home furniture & accessories with an area of 600 m² split over two levels.

The design theme is set in a renaissance style where the walls are divided into separate panels & decorated by textured plaster or stone to look more like an apartment than a store, which helps customers visualize the furniture in their own homes.



Scoop of Services

Concept
Design
Detailed Design
Tender
Package
Tender Mgmt.
Contract Docs.
Constr. Mgmt..
Constr. Superv.

MAZLOUM MALL
AL SAFWA – 6th OF OCTOBER CITY, EGYPT



This branch of Mazloum showrooms, spread over 4,000 m² on two floors, is designated for sanitary fixtures, fittings & accessories. A contemporary design comprising 2 floors on a As a showroom for finishing products and accessories.

The aim of the design was to create a place where visitors can spend long time comfortably and that invites guests to slow down and become aware of the details that characterize the displayed brands. A good atmosphere and ambiance and free walking space are major design parameters considered in the design.



Dynamic interior design & pleasant features constitute parts of he appealing interior .



Scoop of Services

- Concept
- Design
- Detailed Design
- Tender
- Package
- Tender Mgmt.
- Contract Docs.
- Constr. Mgmt.
- Constr. Superv.

AL SHADY ADMINISTRATION BUILDING

NEW CAIRO, EGYPT

A selection of natural materials with their neutral palette creates a sense of calm throughout the place & create a soothing atmosphere.

Timeless classic luxurious furniture that lasts through the seasons is selected complementing the interior premium materials & finishes.

Special attention is given to the green design aspects, by using natural materials & maximum utilization of natural daylight.



Scoop of Services

Concept
Design
Detailed Design
Constr. Mgmt..
Constr. Superv.

GAD COMPANY NEW CAIRO , EGYPT

The headquarters of GAD construction company interior is custom designed to suit the company's space requirements, as well as providing a healthy, flexible & versatile work space & calm environment that helps employees to focus. & motivated.

Accent walls serve as a great way to grab immediate attention to distinguished spots.

Geometric patterns are incorporated in ceilings & lighting arrangement and wall designs to livens up space .

Ergonomic furniture and fixtures are also considered in the design to boost healthy work environment..

Scoop of Services

Concept
Design
Detailed Design
Constr. Mgmt..
Constr. Superv.



PRIVATE VILLA – ALLEGRIA COMPOUND
BEVERLY HILLS – SH. ZAYED DISTRICT, EGYPT

A bespoke luxury modern villa design offering ample floor area for each space, the design came as an interpretation of the residents culture & lifestyle, both functionally and aesthetically.

Exclusive interior design of the villa impresses with the elegance of the modern and splendor of the timeless classic styles.



A designed textured wall added a sense of depth and elegance to the space while also giving it a layered and dramatic look.

Incorporation of natural plants enriches the interior aesthetics, improves the quality of air & adds an essence vitality to it.

Scoop of Services

- Concept
- Design
- Detailed Design
- Tender
- Package
- Contract Docs.
- Constr. Mgmt..
- Constr. Superv.

PRIVATE VILLA – ALLEGRIA COMPOUND

BEVERLY HILLS – SH. ZAYED DISTRICT, EGYPT

A textured wall added a sense of depth and elegance to your space while also giving it a layered and dramatic look.

Wood floors play a bigger role in the design; simple combination of wooden floor and marble wall paneling implements an accent of sophistication and luxury.

Color coated gypsum ceilings are designed to provide a sort of aesthetical look in integration with light fittings that are of different types.



Bedroom interior is in earthy colors with some brighter accents that create extremely warm and cozy surrounding.

Light colored furnishings and some warm lights enhance a modern rustic interior stylish design.

PRIVATE VILLA – LAKE VIEW 42/5
NEW CAIRO, EGYPT

A modern design villa, where the design leans towards cleanliness and clarity of lines. All materials & details has been carefully chosen to capture the targeted luxury concept.

The main living area is quite open, featuring just a few carefully chosen furnishings & glass walls leave rooms open to the rest of the layout, rendering space airy, meanwhile, look contemporary and stylish.

Gray and white colors worked well with the subtle pattern in rugs as well as the natural grain of the wooden doors.



Scoop of Services

- Concept
- Design
- Detailed Design
- Tender
- Package
- Contract Docs.
- Constr. Mgmt..
- Constr. Superv.

PRIVATE VILLA – LAKE VIEW 42/5

NEW CAIRO, EGYPT

Every room receives special design treatment to create an atmosphere that stands apart & is directly inked to the personality of its user, while still adhering to a unifying concept of the whole villa.

A combination of classical elements are blending into a bespoke style that has a more contemporary accent .



Seamless textured or patterned walls are used to add a sense of depth and elegance to the spaces and to give a layered and dramatic look.

PRIVATE VILLA AT CITY VIEW

GIZA, EGYPT

The goal of the villa design was to create a cozy & comfortable interior that also has personal touches, making it a wonderful place to live for the family. The villa interior was designed to give a modern look utilizing modern attractive finishing materials and comfortable yet pleasant to the eye color schemes.

The living space opens up to the dining area, which is decorated with modern dining chairs. Dining and cooking area are designed in such a way so as to facilitate direct & smooth circulation.



Scoop of Services

- Concept
- Design
- Detailed Design
- Tender
- Package
- Contract Docs.
- Constr. Mgmt..
- Constr. Superv.

PRIVATE VILLA AT CITY VIEW

GIZA, EGYPT

Functions and efficient utilization of spaces were two of the major design factors, the interior was developed to meet with the end-user requirements and taste.

The bedrooms are designed to provide comfort and efficient space utilization. Materials and colors are neatly selected to be cozy & intimate, they are decorated in plenty of cool tones, mainly grey, which is good for a relaxing night's sleep.



A bold selection of bathroom finishes appears in the wooden wall cladding; against which porcelain white tile give an elegant ambience.

LOGISTIC CITY STARS HOTEL

CAIRO, EGYPT

The project aimed at renovating the interior of the 4-star hotel and enhancing its overall image. Al Amar prepared conceptual interior design for the main reception lobby, guestrooms and public spaces.

The design is intended to give a touch of luxury through prudent selection of sleek finishing materials, decoration elements and accessories. Light effects are also carefully designed to respond to functional requirements and aesthetical influence.

The furniture arrangement is designed to meet functional performance, efficient circulation and comfort needs.

Bright lobby welcoming the guest with an elegant atmosphere. Marble, crystal chandelier, unique art pieces, modern style furniture, and water feature in a combination that creates a cozy and luxurious feel. While all commercial spaces are designed in a highly functional, yet aesthetically appealing, way.



Scoop of Services

Bldg. Cond. Assess.
Concept Design

LOGISTIC CITY STARS HOTEL

CAIRO, EGYPT

The guestrooms are designed to provide comfort and efficient space utilization. Materials and colors are neatly selected to be cozy and homely considering operational requirements, e.g. durability and maintenance demand. Guestrooms are decorated in plenty of cool tones, mainly grey, which is good for a relaxing night's sleep.

Cozy rooms have all amenities for comfort and enjoyable stay. Accessories and artwork are wisely selected considering simplicity and avoiding exaggeration.



PYRAMIDS HALLS COMPLEX

SUEZ, EGYPT

Al Amar was commissioned to design Pyramids Banquet Halls / Ballrooms including interior design. The design aimed at providing ambiance that is elegant, appealing & festive, Functional & operational aspects were also two major factors that directed the design.

The design experience starts at the entrance lobby with its dramatic huge pyramid shaped skylight, where neatly selected types of luxurious marble are used for floors and wall cladding in specially designed shapes and patterns.



Scoop of
Services

Concept
Design
Detailed
Design
Tender
Package
Constr. Superv.



PYRAMIDS HALLS COMPLEX

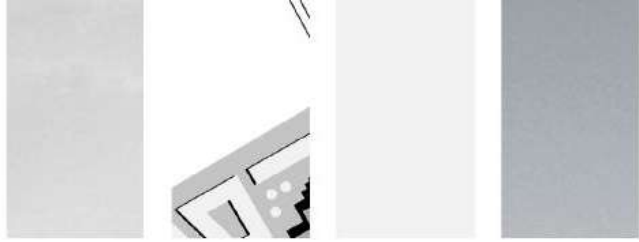
SUEZ, EGYPT



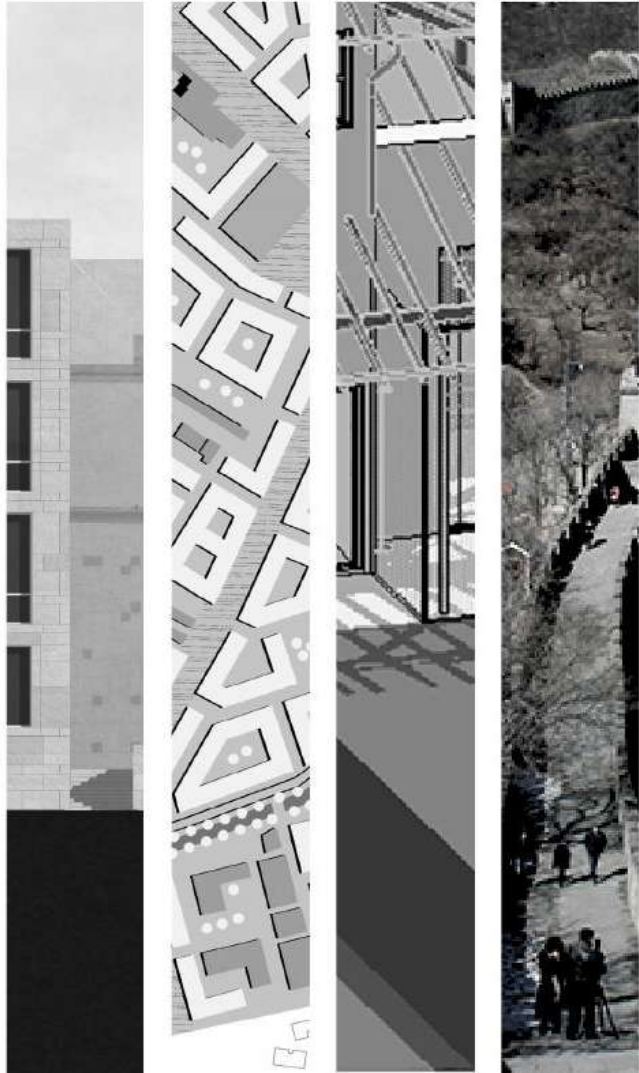
The interior of banquet halls / ballrooms aimed at providing sparkling & merrymaking vibe.

Lighting plays an important role in enhancing the interior environment & spotlighting the stage. A variety of direct & indirect lighting is provided in addition to accent decorative lighting.





URBAN & LANDSCAPE PROJECTS



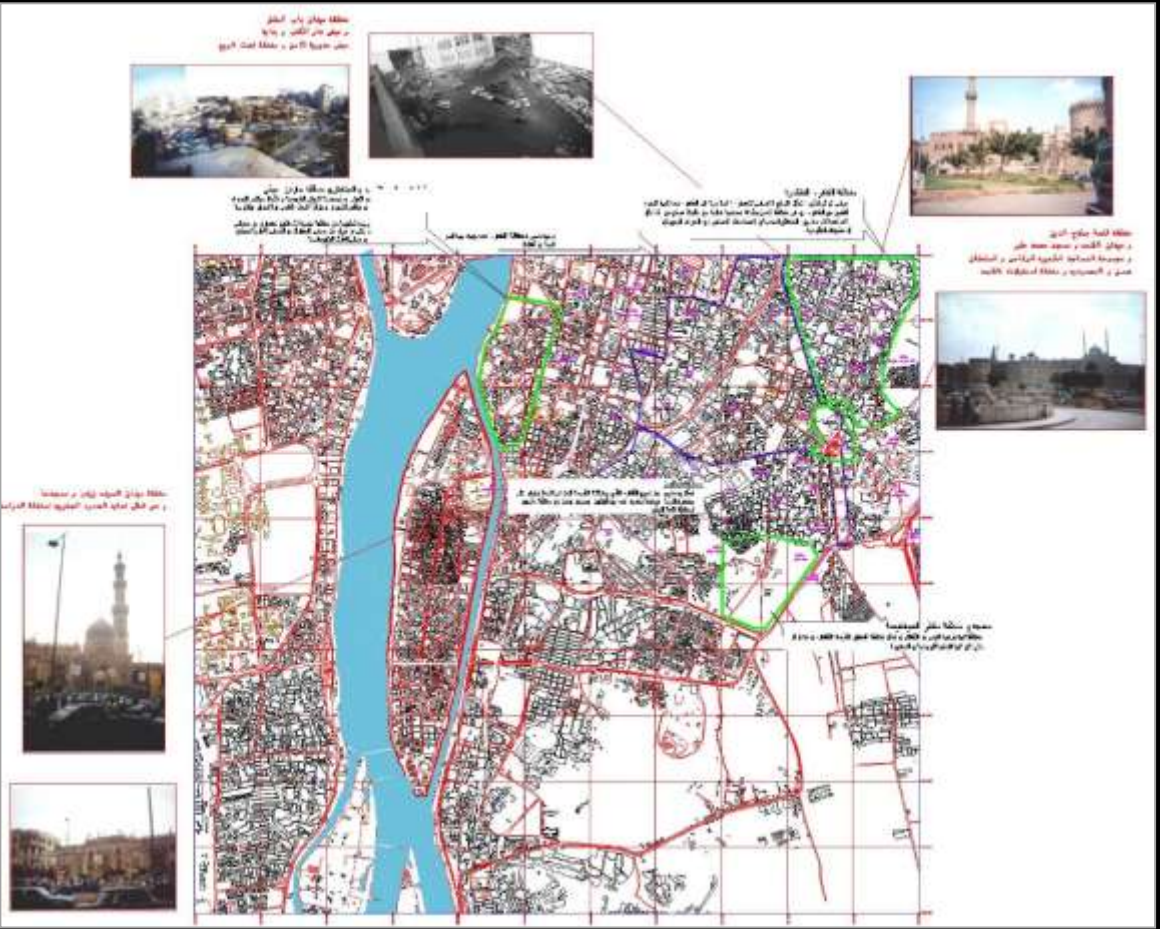
EL HELMIYA URBAN DEVELOPMENT

CAIRO, EGYPT

The Egyptian Ministry of Housing and Urban Development, Greater Cairo Department, main objective is to carryout necessary urban & archaeological studies and to propose upgrade programs for El Helmiya District that defined by the area between Saiyeda Zainab Square, Al Kalaa Square and Al Azhar Road.

The works included survey of urban fabric and buildings, assessment of main urban features and buildings of historical value and propose plans for the upgrade of urban environment and preservation of urban and architectural constituents.

Lead Consultant
Dr. Adel Yassin



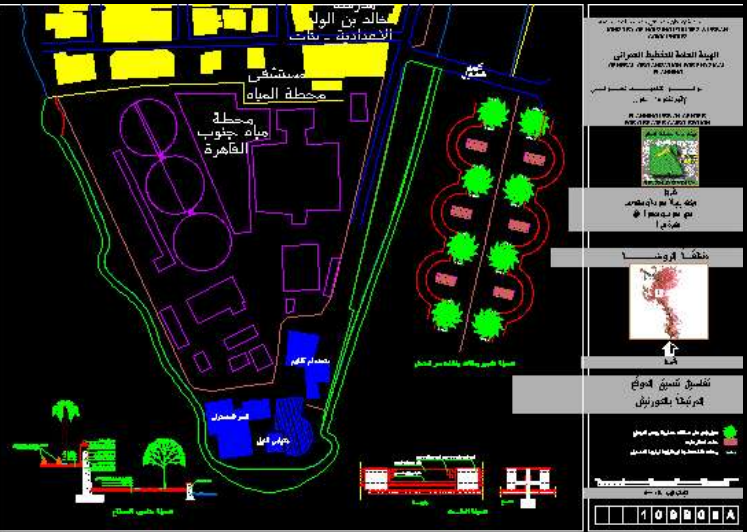
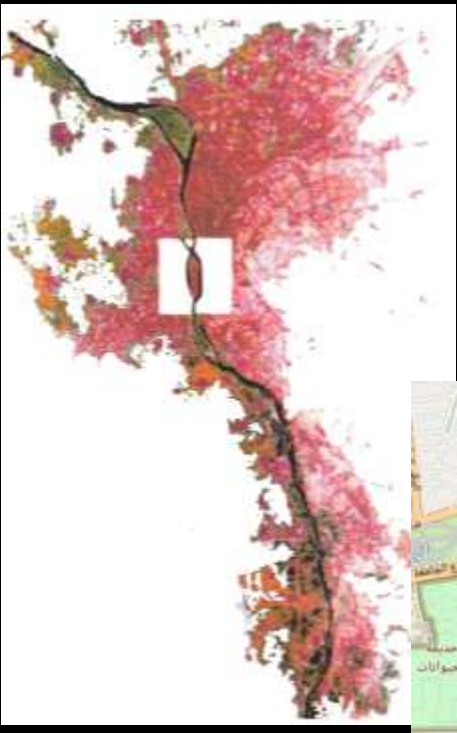
EL RODA ISLAND URBAN DEVELOPMENT CAIRO, EGYPT

The Egyptian Ministry of Housing and Urban Development, Greater Cairo Department, main objective is to carryout necessary urban & archaeological studies and to propose upgrade programs for El Roda Island.

The works included survey of urban fabric and buildings, assessment of main urban features and buildings of historical value and propose plans for the upgrade of urban environment and preservation of urban and architectural constituents.

Lead Consultant

Dr. Adel Yassin



SUEZ PLAZA

SUEZ CITY, EGYPT

The Project aimed at developing this strategically located area to provide a social & recreational hub for the city of Suez.

Al Amar developed the master plan to cater for the Client requirements and to include a promenade, multi-purpose halls, restaurants & cafes, seasonal & permanent retail outlets & kindergarten in addition to services & facilities that includes ample parking areas, piazzas, walkways & shaded sitting areas; all are within lavish landscape & water features.

A great emphasis on environmental aspects & building sustainability is considered in the design.



Scoop of Services

Concept Design
Project Visualization
Design
Development
Detailed Design
Project Permitting
Tender Package

Involved Trades

Master
Planning
Landscape
Architectural
Structural
MEP
Infrastructure



SUEZ PLAZA
SUEZ CITY, EGYPT



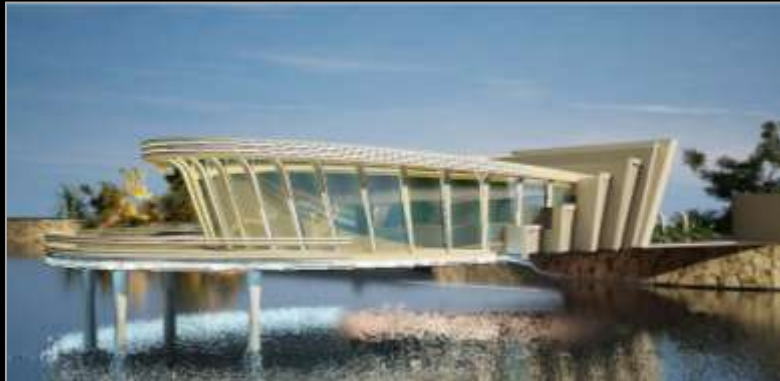
SUEZ PLAZA

SUEZ CITY, EGYPT

Soft-scape was designed considering indigenous & water saving plants with incorporation of natural stones, rocks & gravel mulch.

The buildings design is modern with incorporation of modern forms, construction technology & modern finishing materials.

The terraces breaching the lake area are supported on columns to maintain the water surfaces uninterrupted & to minimize impact on natural site components.



Benghazi Family Park

BENGHAZI, LIBYA

Al Amar designed master plan, landscape buildings' architecture of the hospitality mixed-use development.

The master plan provides well studied vehicular & pedestrian circulation & logical relationships between different functions. Relevant functions are connected via central piazzas for pedestrian use only.

The buildings' design has taken into consideration the modernized local architectural styles & using local building materials to the extent possible.



Scoop of Services

Concept Design
Project Visualization
Design
Development
Detailed Design
Tender Package
Involved Trades

Architectural
Landscape

In Association with
AMAR CONSULTING GROUP S.A

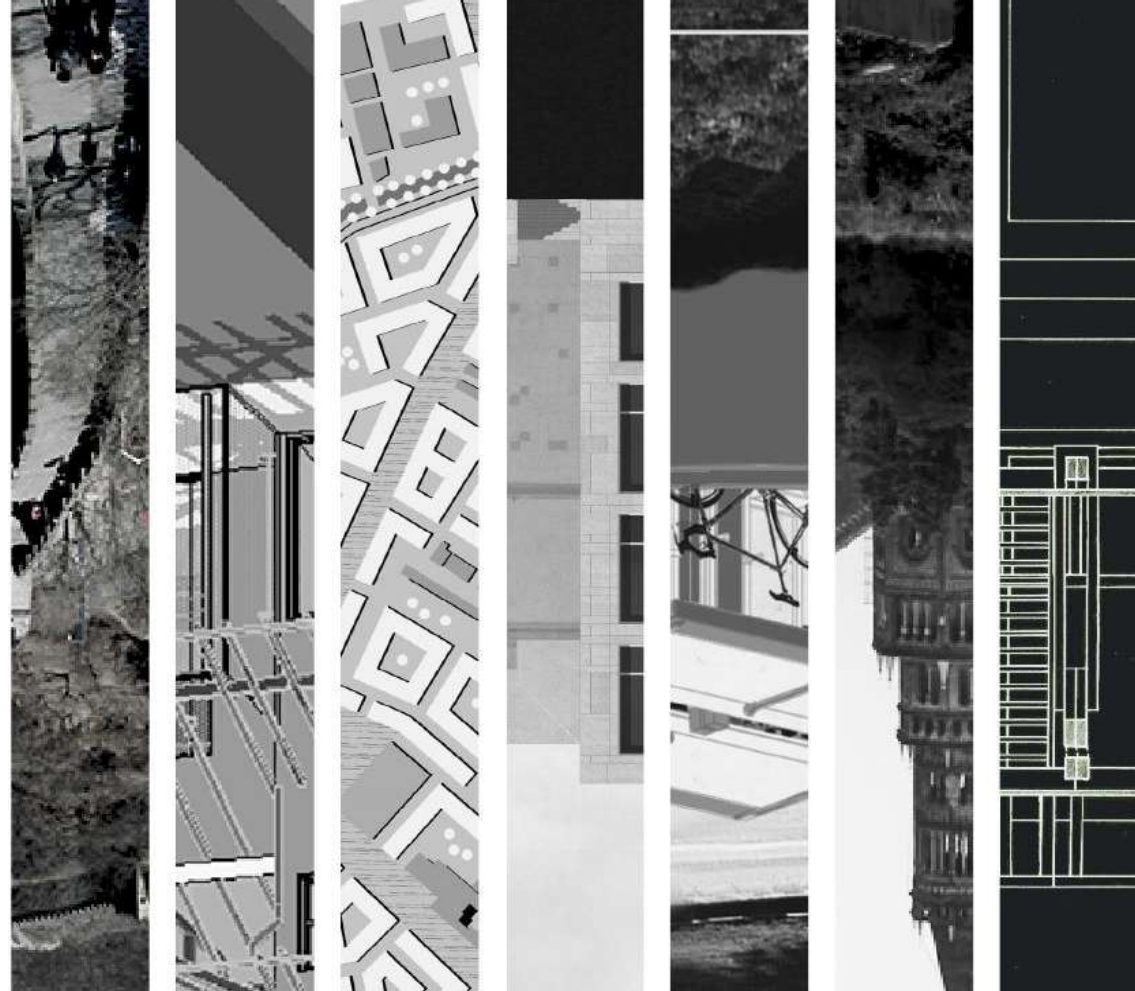
www.alarconsult.com

Elsefarat District , Nasr City,
Cairo, Egypt

+20 2 22876757

+20 122 7420341

info@alarconsult.com



Since 1995

